

# Under Bridge Maintenance Unit



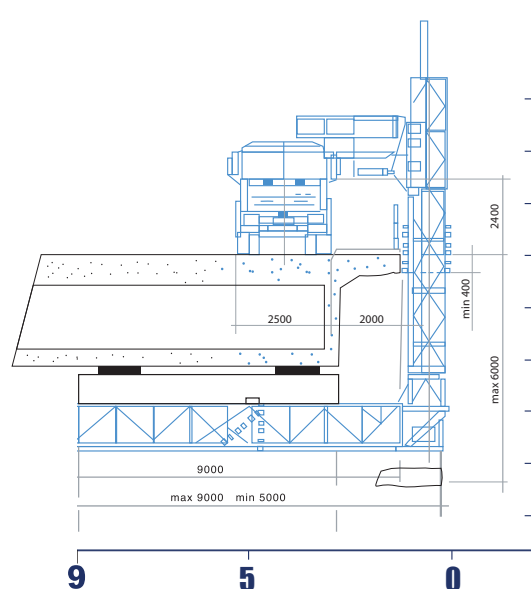
## 5 - 9 Metre Moog Industrial Platform

**UNIT NUMBER: UBM 9**

WITH DUAL CONTROL OPERATION AND SIDE WIDTH EXTENSION

### General Specs

Platform length	9 m
Max lowering depth	6 m
Width of platform	1.1 m
Max load at end of telescopic platform	200 kg
Safe working load	400 kg
Rotation of platform	180 <sup>0</sup>
Set up width required on bridge	2.5 m
Travelling height (stowed)	4.5 m
Travelling width	2.5 m
Travelling length	9.1 m
Overall weight (approx)	24,500 kg
Dual Control Truck	Yes
Deployment Side	left and right
Outriggers	No
Side Walk extension	Left side only



### Additional Equipment

- Generator 6KVA (silenced)
- Screw Compressor 100CFM
- Pressure Cleaner 3500psi
- Water Tank - Capacity to carry 1000L



UBM 9

[www.dubu.net.au](http://www.dubu.net.au)

**Down Under Bridge Units Pty Ltd**

P: 0488 020 070

E: [info@dubu.net.au](mailto:info@dubu.net.au)

ABN: 13 622 334 990

P: PO Box 239 West Burleigh QLD 4219

A: 3 Rudman Parade, Burleigh Heads QLD 4220