

# Under Bridge Inspection Unit

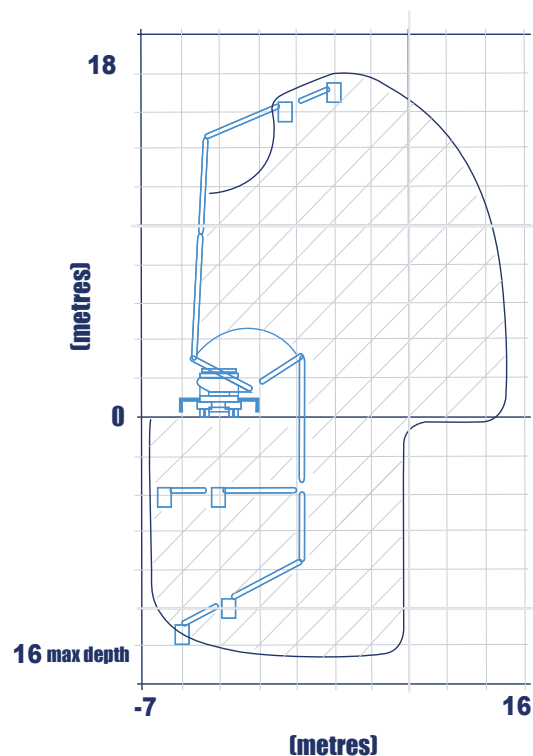


## 18 Metre Cella Telescopic Bucket

UNIT NUMBER: UBI 1 & 2

### General Specs

Horizontal Range	16 m
Horizontal Under Bridge Range	7 m
Max lowering depth	16 m
Max working height	18 m
Bucket Capacity	2 man bucket
Max load at end of telescopic bucket	200 kg
Rotation of platform	360°
Set up width required on bridge	3.5 m
Travelling height (stowed)	3.45 m
Overall weight (approx)	12,500 kg
Dual control truck	No
Deployment side	left / right and rear
Outriggers	Yes
Side walk extension	No



### Additional Equipment

- Generator 6KVA (silenced)



UBI 2

[www.dubu.net.au](http://www.dubu.net.au)

**Down Under Bridge Units Pty Ltd**

P: 0488 020 070

E: [info@dubu.net.au](mailto:info@dubu.net.au)

ABN: 13 622 334 990

P: PO Box 239 West Burleigh QLD 4219

A: 3 Rudman Parade, Burleigh Heads QLD 4220