



**DOWN UNDER  
BRIDGE  
UNITS**



# Rates & Specs 2023

# Rates for 2023



Unit Description	Quantity	Wet Hire Daily Rate (excl GST)
4m Aichi Platform Under Bridge Maintenance Unit / UBM 10	1	\$2392.00 - (\$299 per hr)
7m Moog Platform Under Bridge Maintenance Unit / UBM 4 & 6	2	\$2392.00 - (\$299 per hr)
7m Moog Platform Under Bridge Maintenance Unit - Industrial / UBM 2	1	\$2392.00 - (\$299 per hr)
9m Moog Platform Under Bridge Maintenance Unit - Industrial / UBM 9	1	\$2600.00 - (\$325 per hr)
9m Barin Platform Under Bridge Maintenance Unit - Industrial / UBM 12	1	\$2600.00 - (\$325 per hr)
10.5m Barin Platform Under Bridge Maintenance Unit - Industrial / UBM 1	1	\$2600.00 - (\$325 per hr)
13.5m Barin Platform Under Bridge Maintenance Unit - Industrial / UBM 11	1	\$2808.00 - (\$351 per hr)
14m Moog Platform Under Bridge Maintenance Unit / UBM 5	1	\$2808.00 (\$351 per hr)
14m Moog Platform Under Bridge Maintenance Unit - Industrial / UBM 7 & 8	2	\$2808.00 - (\$351 per hr)
13m Moog platform Under Bridge Crawler Unit / CR 1	1	\$2392.00 - (\$299 per hr)
16m Moog Telescopic Bucket Under Bridge Inspection Unit / UBI 3	1	\$2808.00 - (\$351 per hr)
19m Tadano Aerial Work Platform / UBI 4	1	\$1600.00 - (\$200 per hr)

- Minimum hire is 8 hours. After 8 hours, applicable daily rate + overtime applies.
- Overtime rate = "Truck hourly rate" plus \$59 per hour (+ GST) applies to hire on weekends, and between the hours of 5pm to 6.30am and any hire over 8 continuous hours. Public Holidays is \$78 per hour (+GST)
- Minimum call out during the day (0630-1700) or night (1700-0630) is 8 hours including travel time.
- Travel outside the local regional depot area is at 8 hours minimum.
- Travel is subject to overtime rate.
- Toll Fees Apply
- Living Away from Home Allowance = \$350.00 (+GST)

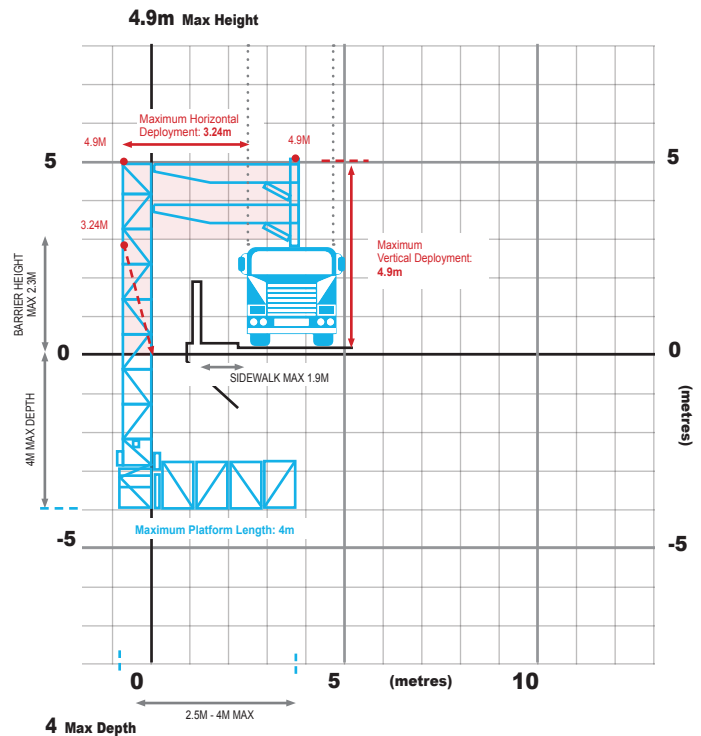




## 2.5 - 4 Metre Aichi Platform

### General Specs

Platform length	2.5 - 4 m
Max lowering depth	4 m
Max vertical height	4.9 m
Max horizontal width	3.2 m
Width of platform	1 m
Max load at end of telescopic platform	125 kg
Safe working load across platform	250 kg
Rotation of platform	180°
Set up width required on bridge	2.3 m
Travelling height (stowed)	4.2 m
Travelling width	2.3 m
Travelling length	8.5 m
Overall weight (approx)	10,400 kg
Dual control truck	No
Deployment side	Left / right and rear
Outriggers	Yes
Side walk extension	No



### Additional Equipment

- Generator 6KVA (silenced)



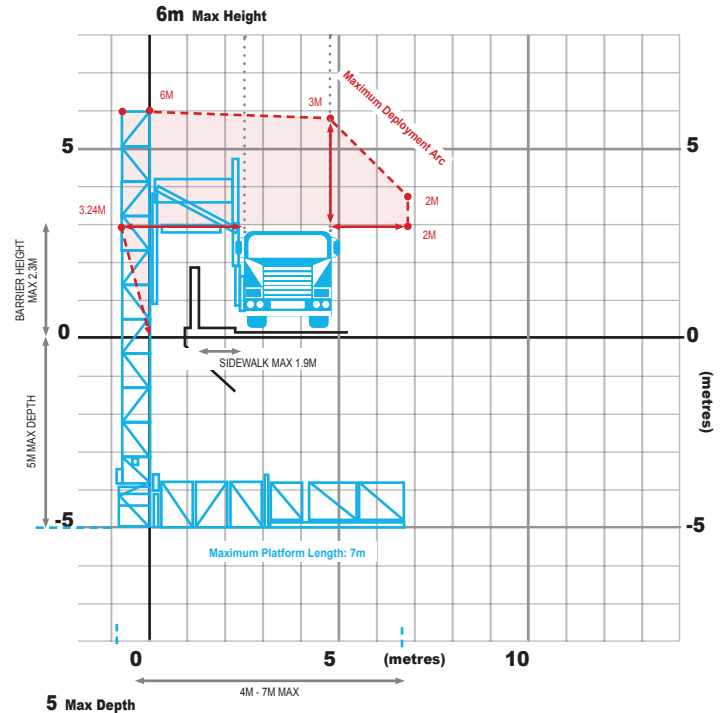
Lightweight and super mobile this unit is ideal for bridges with a low weight limit or hard to reach areas. It is capable of deploying from left, right and rear of the truck making it perfect for use on jetties or wharfs.



## 4 - 7 Metre Moog Light Weight Platform

### General Specs

Platform length	4 - 7 m
Max lowering depth	5 m
Max vertical height	6 m
Max horizontal width	3.2 m
Width of platform	1 m
Max load at end of telescopic platform	200 kg
Safe working load across platform	400 kg
Rotation of platform	180°
Set up width required on bridge	2.3 m
Traveling height (stowed)	3.75 m
Traveling width	2.3 m
Traveling length	8 m
Overall weight (approx)	7,800 kg
Dual control truck	No
Deployment side	Left only
Outriggers	Yes
Side walk extension	No



### Additional Equipment

- Generator 6KVA (silenced)
- Screw Compressor 100CFM



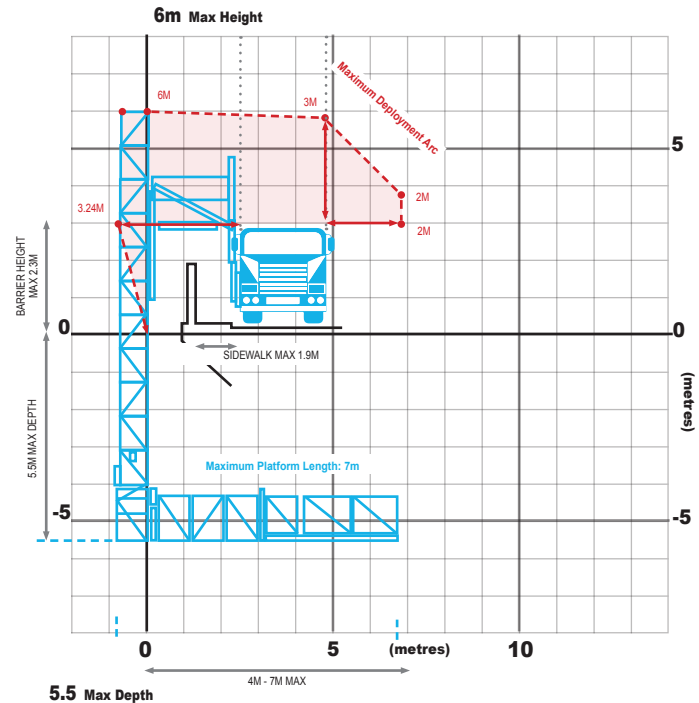
This lightweight truck has a 7 metre platform which makes it ideal for bridges with a low weight limit which require a maximum amount of reach. The platform is capable of being deployed in such a way that it can act as a temporary guard rail if needed and the units size combined with its smaller profile makes it perfectly suited for working on narrow bridges or bridges where the pylons are close together.



## 4 - 7 Metre Moog Platform

### General Specs

Platform length	4-7 m
Max lowering depth	5.5 m
Max vertical height	6 m
Max horizontal width	3.2 m
Width of platform	1 m
Max load at end of telescopic platform	200 kg
Safe working load across platform	400 kg
Rotation of platform	180°
Set up width required on bridge	2.5 m
Traveling height (stowed)	3.75 m
Traveling width	2.5m
Traveling length	8.1 m
Overall weight (approx)	9,400 kg
Dual control truck	Yes
Deployment side	Left and right
Outriggers	No
Side walk extension	No



### Additional Equipment

- Generator 6KVA (silenced)



This is another of our lightweight machines. Its got a 7m platform which can handle 400kg work load evenly spread across it.

Its capable of being deployed both left and right and has dual control to allow for precision driving in tight spaces.



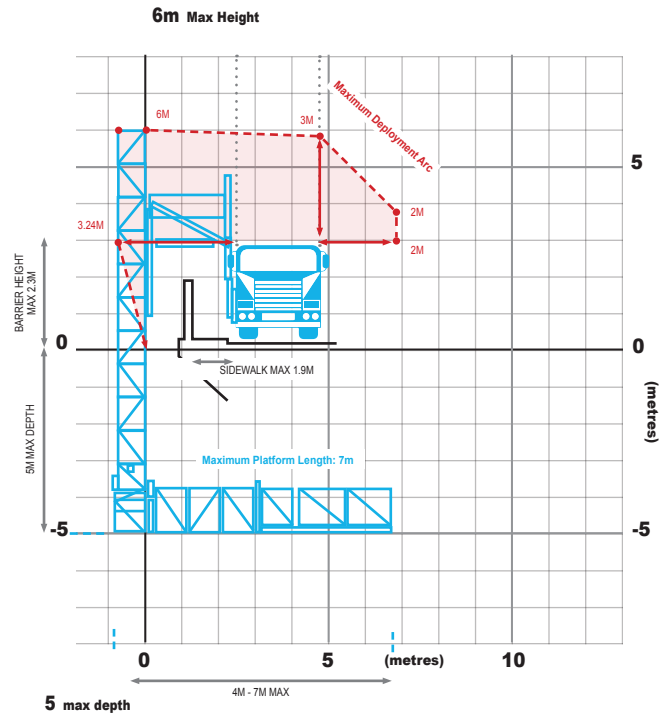


## 7 Metre Moog

## Industrial Platform

### General Specs

Platform length	7 m
Max lowering depth	5 m
Max vertical height	6 m
Max horizontal width	3.2 m
Width of platform	1 m
Max load at end of telescopic platform	200 kg
Safe working load across platform	400 kg
Rotation of platform	180°
Set up width required on bridge	2.5 m
Overall height	3.75 m
Traveling width	2.5 m
Traveling length	8 m
Overall weight (approx)	15,000 kg
Dual control truck	Yes
Deployment side	Left and right
Outriggers	No
Side walk extension	No



### Additional Equipment

- Generator 6KVA (silenced)
- Screw Compressor 100CFM
- Pressure Cleaner 3500psi
- Water Tank - Capacity to carry 2000L



This is the beast of our fleet. Its a 7m Moog platform mounted on a dual control Acco with permanently fixed generator, screw compressor, pressure cleaner and water tank.

The twin steer makes it perfectly suited for remote and hard to reach job sites. This unit was used to inspect 100 km of the decommissioned Greenvale railway line which pulled some of the longest trains in Australia. The line is now being used as a hiking trail.

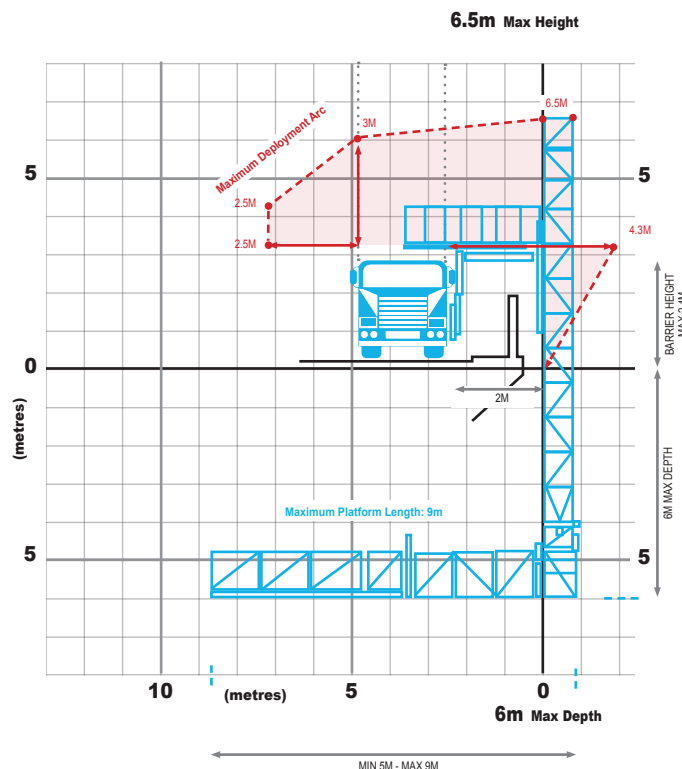


## 5 - 9 Metre Moog Industrial Platform

WITH DUAL CONTROL OPERATION AND SIDE WIDTH EXTENSION

### General Specs

Platform length	5-9 m
Max lowering depth	6 m
Max vertical height	6.5 m
Max horizontal width	4.3 m
Width of platform	1.1 m
Max load at end of telescopic platform	250 kg
Safe working load	500 kg
Rotation of platform	180°
Set up width required on bridge	2.5 m
Traveling height (stowed)	4.5 m
Traveling width	2.5 m
Traveling length	9.1 m
Overall weight (approx)	15,000 kg
Dual control truck	Yes
Deployment side	Left and right
Outriggers	No
Side walk extension	1.95 – 2.95m Left side 1.95m right side



### Additional Equipment

- Generator 6KVA (silenced)
- Screw Compressor 70CFM
- Pressure Cleaner 3500psi
- Water Tank - Capacity to carry 2000L



This platform is fitted with dual controls and a sidewalk extension, making it easier to navigate tighter bridges. Combine this with the capability to extend 9m horizontally along edge of bridge, makes for an extremely versatile machine.

**INTERESTING FACT:** Down Under Bridge Units is the only under bridge unit company whose owner still operates. The owner is actively engaged in the building, maintenance, and operations of the bridge units as well as the day-to-day operations of Down Under Bridge Units. He loves going down, and under!

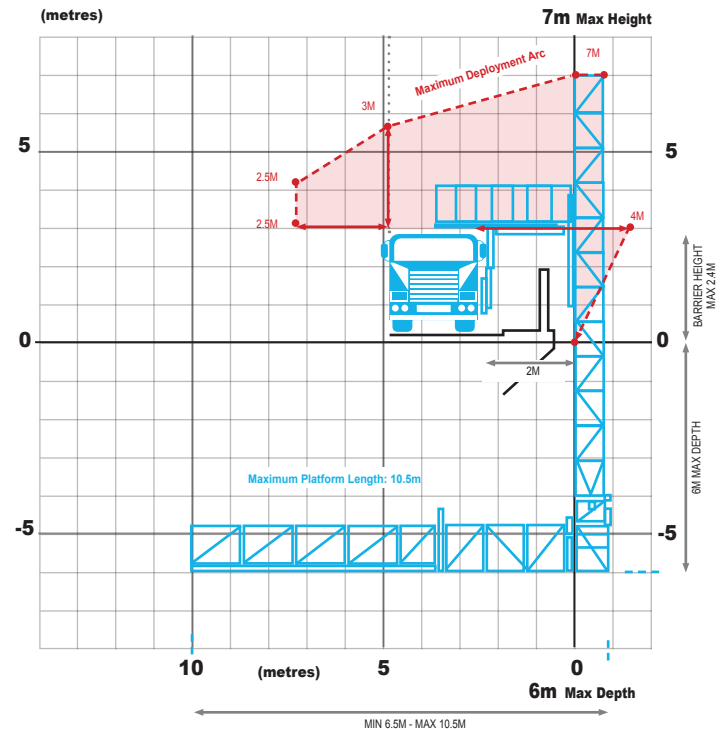
# Under Bridge Maintenance Unit UBM 1



## 6 - 10.5 Metre Barin Industrial Platform

### General Specs

Platform length	10.5 m
Max lowering depth	6 m
Width of platform	1.2 m
Max load at end of telescopic platform	250 kg
Safe working load across platform	500 kg
Rotation of platform	180°
Set up width required on bridge	2.5 m
Traveling height (stowed)	4 m
Traveling width	2.5 m
Traveling length	8.8 m
Overall weight (approx)	21,500 kg
Dual control truck	Yes
Deployment side	Left only
Outriggers	Yes
Side walk extension	No



### Additional Equipment

- Generator 6KVA (silenced)
- Screw Compressor 100CFM
- Pressure Cleaner 3500psi
- Water Tank - Capacity to carry 2000L



Your safety is at the core of everything we do at Down Under Bridge Units. In addition to all the units complying with Australian Standards the company is constantly improving ways to make the towers safer for its clients and drivers. The company has started introducing dual control vehicles into its fleet along with extensive camera and lighting systems to give the operator and clients greater visibility and provide for a more safe working environment. Our operators are First Aid certified and in addition to First Aid kits, our trucks carry automated external defibrillators onboard in case of an emergency.

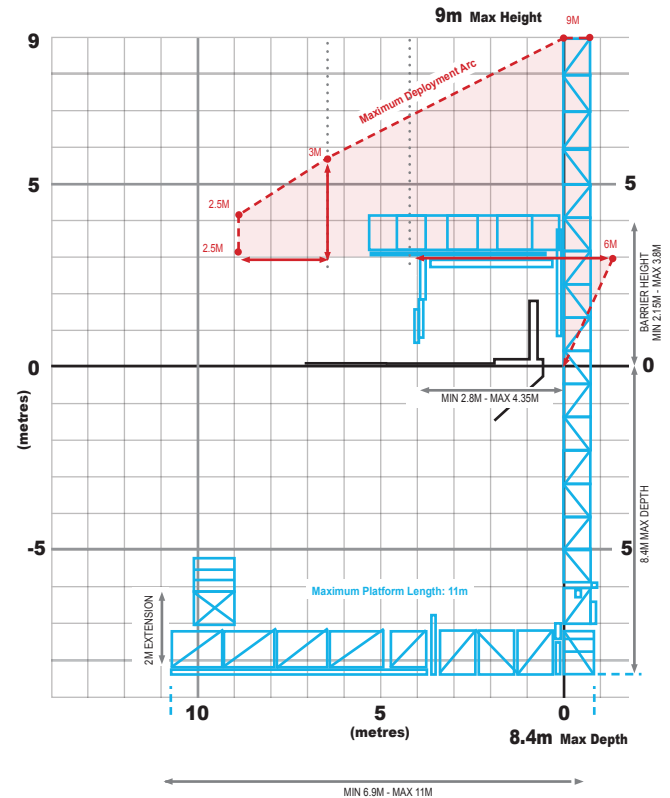




## 7 - 13 Metre Barin Industrial Platform

### General Specs

Platform length	7-13 m
Max lowering depth	8.4 m
Max vertical height	9 m
Max horizontal width	6 m
Width of platform	1.2 m
Max load at end of telescopic platform	150 kg
Safe working load across platform	500 kg
Rotation of platform	180°
Set up width required on bridge	2.5 m
Traveling height (stowed)	4 m
Traveling width	2.5 m
Traveling length	11.7 m
Overall weight (approx)	26,000 kg
Dual control truck	No
Deployment side	Left only
Outriggers	Yes
Side walk extension	Yes



### Additional Equipment

- Generator 18KVA 3-phase
- Screw Compressor 100CFM
- Pressure Cleaner 3500psi
- Water Tank - Capacity to carry 1000L



The 7 – 13 metre Barin Industrial platform has the capacity to reach out 4m while launching over a 3.8m barrier. It has an 11 metre platform capable of being loaded with 500kg of personnel and equipment and comes fully loaded with a generator, screw compressor, gurney and the ability to carry 1000L of water. All this capacity makes it the perfect work horse to support any major project

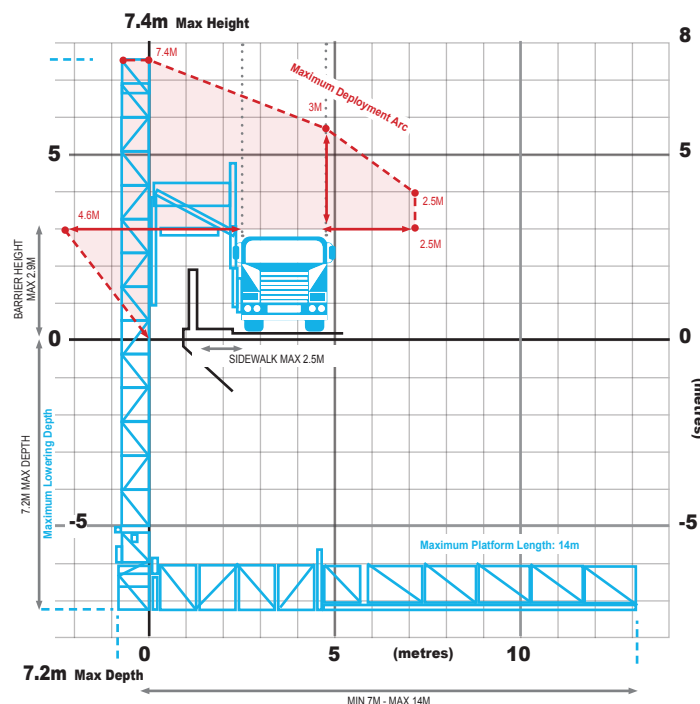


## 7 - 14 Metre Moog Industrial Platform

WITH DUAL CONTROL OPERATION AND SIDE WIDTH EXTENSION

### General Specs

Platform length	7-14 m
Max lowering depth	7.2 m
Max vertical height	7.4 m
Max horizontal width	4.6 m
Width of platform	1.2 m
Max load at end of telescopic platform	150 kg
Safe working load across platform	500 kg
Rotation of platform	180°
Set up width required on bridge	2.5 m
Traveling height (stowed)	4 m
Traveling width	2.5 m
Traveling length	10.25 m
Overall weight (approx)	21,500 kg
Dual control truck	Yes
Deployment side	Left and right
Outriggers	No
Side walk extension	Yes



### Additional Equipment

- Generator 6KVA (silenced)
- Screw Compressor 100CFM
- Pressure Cleaner 3500psi
- Water Tank - Capacity to carry 1000L



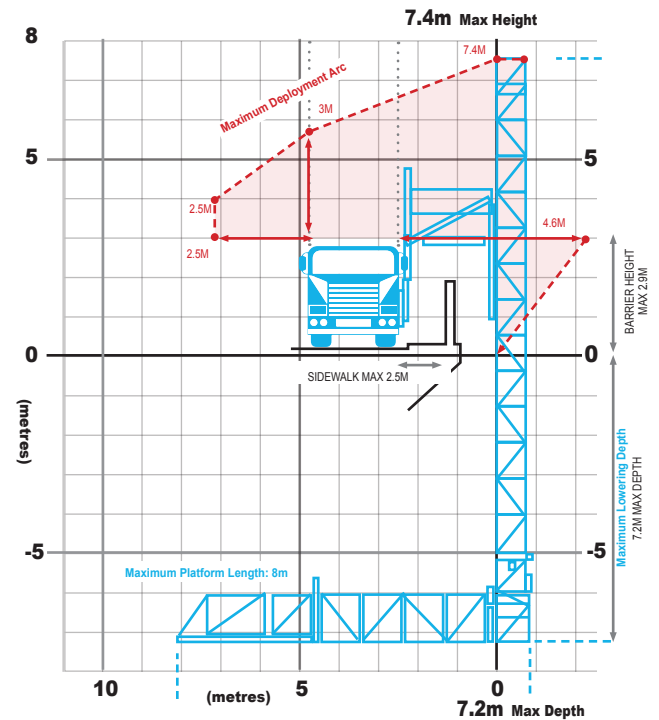
We have some of the most skilled under bridge unit operators in Australia. They have the training and expertise needed to safely and efficiently access the wide array of bridges that are found across Australia.



## 6 - 9 Metre Barin Industrial Platform

### General Specs

Platform length	6 - 9 m
Max lowering depth	7.2 m
Max vertical height	8 m
Max horizontal width	4 m
Width of platform	1.2 m
Max load at end of telescopic platform	150 kg
Safe working load across platform	500 kg
Rotation of platform	180°
Set up width required on bridge	2.5 m
Traveling height (stowed)	4 m
Traveling width	2.5 m
Traveling length	10.5 m
Overall weight (approx)	10,600 kg
Dual control truck	No
Deployment side	Left and right
Outriggers	No
Side walk extension	No



### Additional Equipment

- Generator 6KVA
- Screw Compressor 60 CFM



#### INTERESTING FACT

Did you know: in the effort to assist with bridge inspections and maintenance, just one of our operators has been known to cover, while driving from bridge to bridge, the circumference of the WORLD in just 10 months!



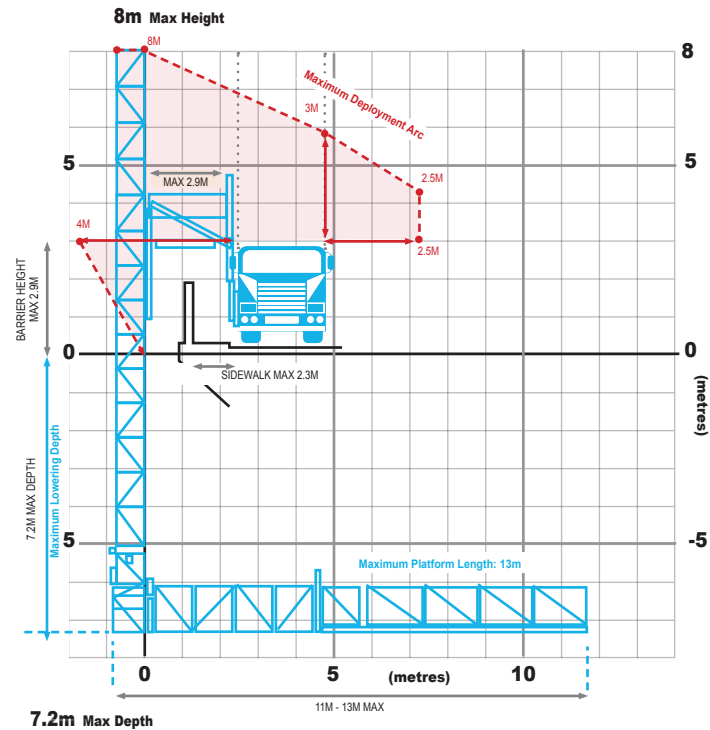
# Under Bridge Maintenance Unit UBM 7 & 8



## 7-14 Metre Moog Industrial Platform

### General Specs

Platform length	7-14 m
Max lowering depth	7.2 m
Max vertical height	8 m
Max horizontal width	4 m
Width of platform	1.2 m
Max load at end of telescopic platform	150 kg
Safe working load across platform	500 kg
Rotation of platform	180°
Set up width required on bridge	2.5 m
Traveling height (stowed)	4 m
Traveling width	2.5 m
Traveling length	10.5 m
Overall weight (approx)	23,000 kg
Dual control truck	No
Deployment side	Left and right
Outriggers	No
Side walk extension	No



### Additional Equipment

- Generator 6KVA (silenced)
- Screw Compressor 100CFM
- Pressure Cleaner 3500psi
- Water Tank - Capacity to carry 1000L



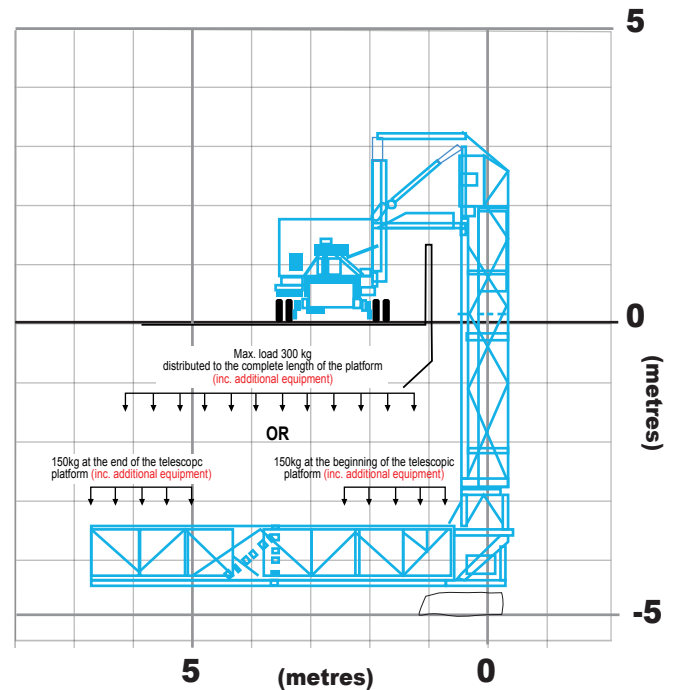
The two operators who operate these trucks have been with the company almost since the beginning. Their trucks are identical which has resulted in them being highly competitive about who can keep their truck the shiniest... Needless to say both trucks are immaculate and a complete joy to look upon.



## Moog Crawler Mounted Industrial Platform

### General Specs

Platform length	4-7 m
Max lowering depth	4.4 m
Max vertical height	8 m
Max horizontal width	7 m
Width of platform	1.7 m
Max load at end of telescopic platform	150 kg
Safe working load across platform	300 kg
Rotation of platform	180°
Set up width required on bridge	2.5 m
Traveling height (stowed)	4 m
Traveling width	1.7 m
Traveling length	7 m
Overall weight (approx)	3,800 kg
Dual control truck	No
Deployment side	Left and right
Outriggers	No



### Additional Equipment

- Generator 18KVA 3-phase
- Screw Compressor 100CFM



This is a 13m Moog platform mounted on tracks. It's incredibly light and narrow making it perfect for narrow bridges requiring a light load. This unit has the option to come with or without an operator and we can deliver it to anywhere in Australia.



# Under Bridge Inspection Unit UBI 3



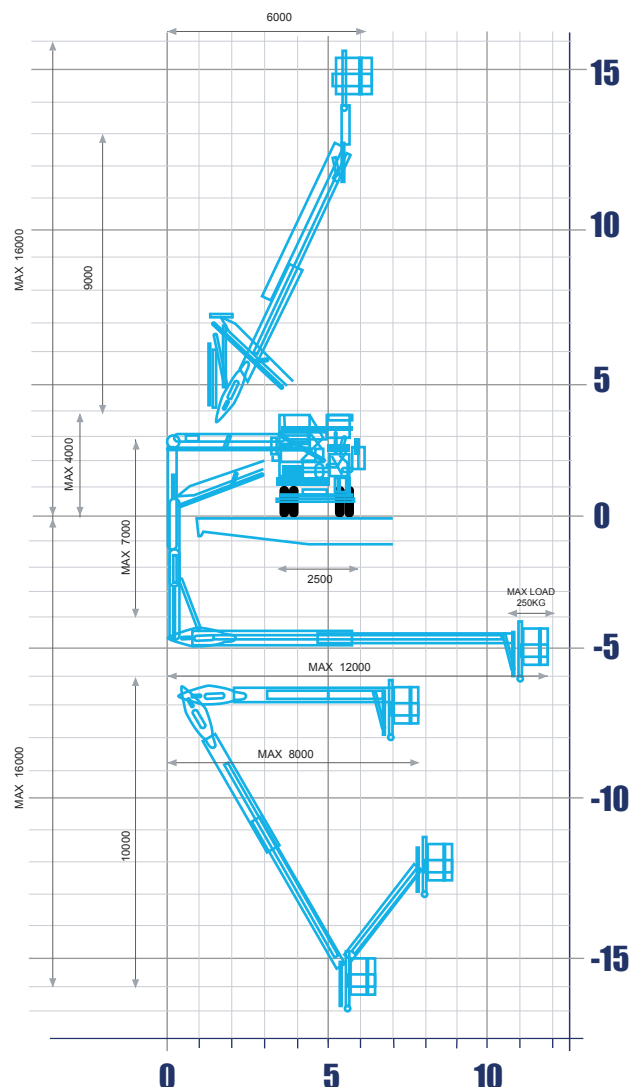
## 16 Metre Moog Telescopic Bucket

### General Specs

Horizontal Under Bridge Range	13 m
Max lowering depth	16 m
Max working height	16 m
Bucket Capacity	2 man bucket
Max load at end of telescopic bucket	250 kg
Rotation of platform	180°
Set up width required on bridge	2.5 m
Traveling height (stowed)	4 m
Overall weight (approx)	22,500 kg
Dual Control Truck	No
Deployment Side	Left / right and rear
Outriggers	No
Side Walk extension	Yes

### Additional Equipment

- Generator 6KVA
- Screw Compressor 60CFM



Under a bridge this highly mobile unit can reach 16m down and 13m across. It can easily reach over side walks with its extension, making it ideal for those hard to reach spots on a bridge. The bucket is able to rise an additional 2 metres allowing for access in between bearings. We have been fortunate enough to have used it for inspections on the Hampden Bridge which is located in Kangaroo Valley.

This is the last surviving wooden suspension bridge in Australia and has gothic themed sandstone towers at either end, giving the feeling of entering a castle when approaching.

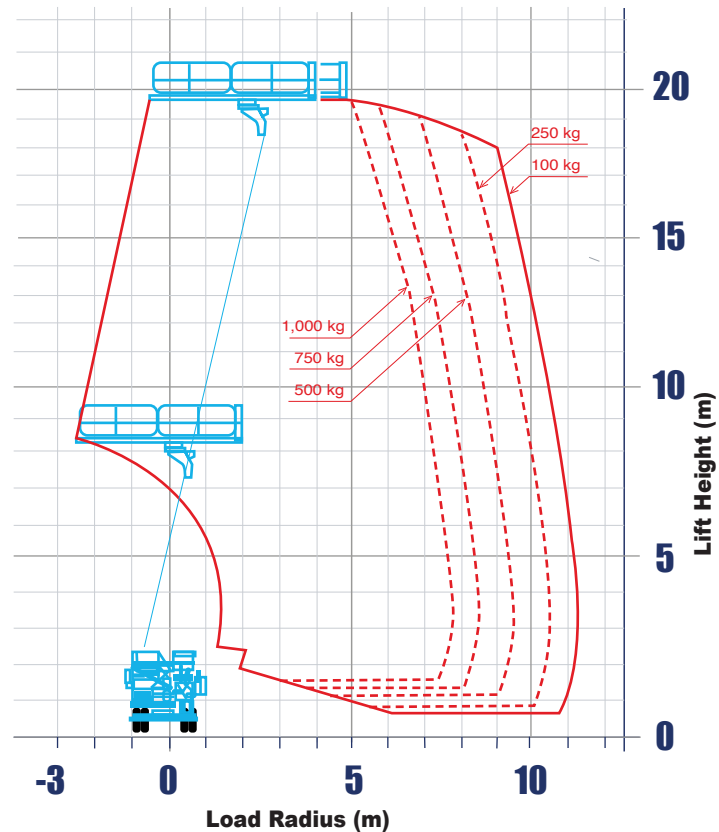




## 19 Metre Tadano Aerial Work Platform

### General Specs

Max. platform capacity	1000 kg
Max. platform height	19.7 m
Platform swing (slewing) angle	360°
Platform Outside Dimensions	4.6mx1.94mx1.01m
Boom Length	5.41m - 16.21m
Elevation	-17° - 79°
Type of boom	Telescopic
Extension width of outriggers	Max. 4.4 m
Overall weight (approx.)	10,800kg



### Additional Equipment

- Generator 7KVA

This is one of the newest acquisitions to our fleet. It deploys up rather than down however its huge platform, capable of being deployed 19.7m into the air has a safe working load of 1000kg.

This makes it perfect for maintenance and repair of over-passes.